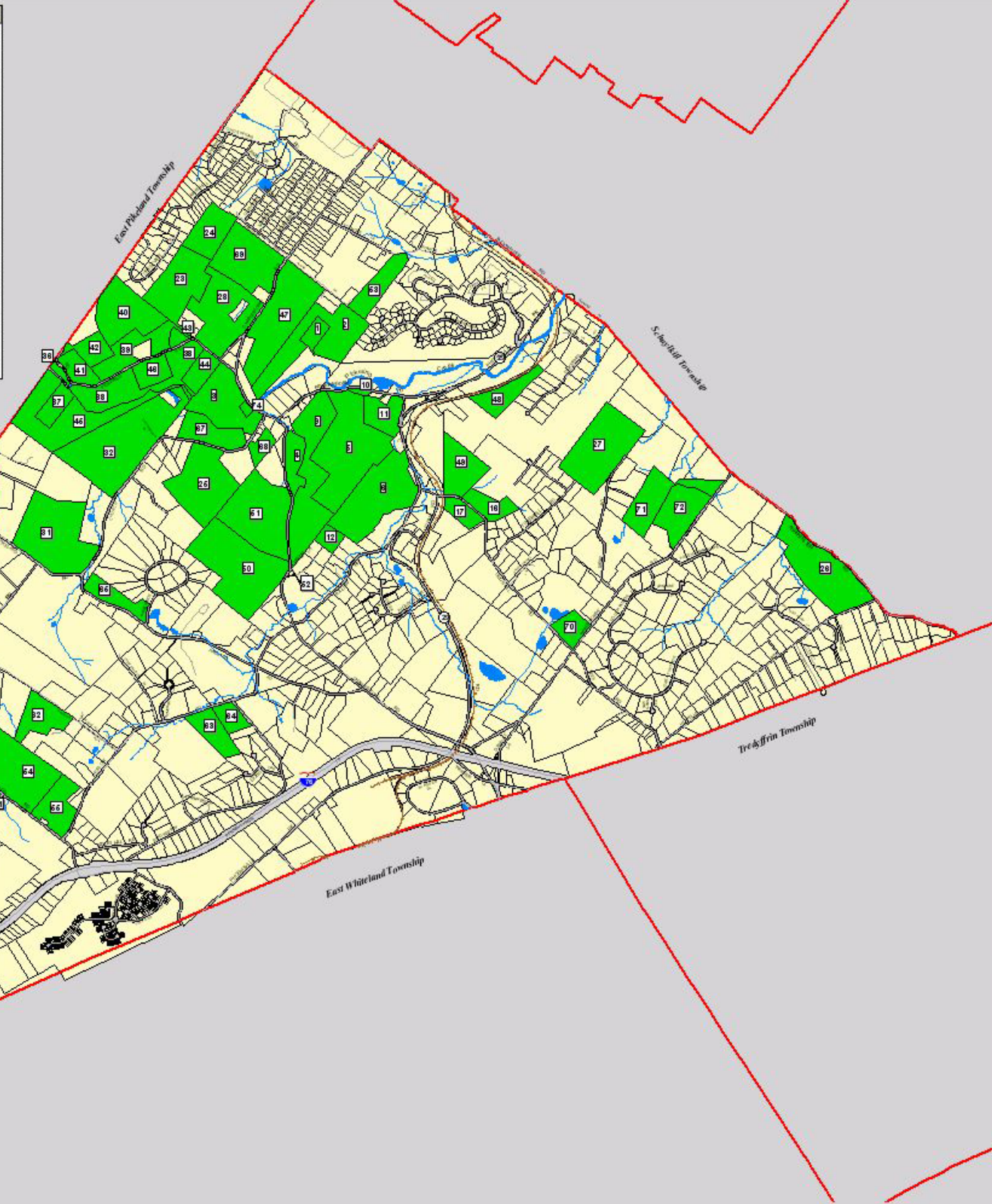


Map No.	Name	Parcel No.	Acres	Map No.	Name	Parcel No.	Acres
1	Anderson	35-2-11	6.62	46	Maier	35-2-112	16.06
2	(Anderson Sub lot)	35-2-11.3	44.93	48	Thompson	35-2-119.1H	23.30
3	Barlisch Foundation	35-274-E	51.55	50	Bislich & Son	35-47	66.72
4		35-285.1-E	35.50	51	Bislich-Whitman	35-47.1	51.93
5		35-291-E	67.91	52	Bislich & Son	35-48	0.06
6		35-296-E	54.19	53	(Bislich Sub lot)	35-2-14	118.71
7	(Barlisch Frnt Sub lot)	35-3-11	1.90	54	Willig	35-3-59-E	18.01
8	Solda	35-3-11.1	18.04	55	Charles town Township	35-3-59-E	20.71
9	(Solda Sub lot)	35-285	52.93	56	(Charles town Twp Sub lot)	35-3-59-E	52.30
10	Bumeder	35-291.1	1.40	57	Mellich	35-3-1.1B	73.01
11		35-294	16.01	58	Bernhard	35-3-24.2	4.74
12		35-4-149	75.55	59	(Bernhard Sub lot)	35-3-25	13.25
13	(Bumeder Sub lot)	35-3-23	55.55	60	Hanscom	35-3-26	1.59
14	Burgoon et al.	35-3-42	8.74	61	(Hanscom Sub lot)	35-3-30	10.26
15		35-3-61	1.38	62	(Hanscom Sub lot)	35-3-29	1.91
16	(Burgoon Sub lot)	35-2-120-E	65.67	63	(Hanscom Sub lot)	35-3-63.1A	12.17
17	Charles town Historical Soc	35-4-69-E	12.36	64	Stieplewski tracks	35-3-77	19.71
18	(Charles town Hst Soc Sub lot)	35-3-28.1	8.61	65	Barholdson	35-4-27	9.85
19	CJA Real Estate	35-3-28	20.97	66	Bleter	35-3-66	13.92
20		35-3-28.1	39.99	67	Gorman	35-4-78	41.33
21	(CJA Real Estate Sub lot)	35-3-28.1	69.56	68	Roway	35-2-75	19.18
22	Coleman	35-3-27	15.11	69	(Naylor Sub lot)	35-2-78-E	7.14
23	Corrado	35-6-5	0.57	70	Anderson	35-2-75	39.30
24		35-6-15	7.51	71	DeCarlo	35-4-7.3A	10.67
25	(Corrado Sub lot)	35-1-12	8.08	72	Bruler	35-2-124	27.71
26	Crowell et al.	35-2-5.1	21.04	73	(Bruler Sub lot)	35-4-82	25.08
27		35-2-76	45.40	74	McClure	35-2-74.2-E	52.79
28	(Crowell Sub lot)	35-6-2	90.47	75	Charles town Township	35-3-1	8.08
29	Fay	35-2-121	50.10	76	BB Real Estate	35-2-74.2-E	1.60
30	Fisher	35-2-7	44.83	77		35-3-7	46.0
31	Heuser	35-3-14	21.85	78			899.55
32	Hausladen	35-3-46	14.30				
33	Hing	35-3-49.1	58.32				
34	Joos	35-1-5	77.17				
35	McDevitt	35-6-2	47.11				
36		35-7-1	75.49				
37	(McDevitt Sub lot)	35-7-2	10.52				
38	Slonow-Baly et al.	35-1-3	91.72				
39	Foster-Slonow	35-1-3	2.18				
40	Foster-Slonow & Slonow-Baly	35-1-4	10.43				
41	Foster-Slonow et al.	35-1-4.4	21.04				
42	Foster-Slonow et al.	35-1-2	22.76				
43	Foster-Slonow et al.	35-1-2.2	35.51				
44	Slonow-Baly	35-1-2.3	10.59				
45	Slonow & Churchill	35-1-2.3A	11.87				
46	Slonow-Baly et al.	35-1-2.4	3.15				
47	Slonow-Baly et al.	35-1-4.2	10.50				
48	Slonow-Baly et al.	35-1-4.3	48.46				
49	Foster	35-1-4.4A	11.47				
50	Slonow-Baly et al.	35-2-10.1	53.71				
51	(Slonow Sub lot)		28.49				



Legend

- Agricultural Security Areas
- Township Boundary
- Railroad Lines
- Minor Streams
- Major Streams & Ponds

N

0 0.5

Miles

Data Sources:
 Agricultural Security Areas:
 Charlestown Township
 Records
 Base Features:
 Chester County GIS
 Department, February 2005

AGRICULTURAL SECURITY AREAS

Charlestown Township

Chester County
Pennsylvania

Prepared by:
 Thomas Comitta Associates, Inc.
 Town Planners & Landscape Architects
 18 West Chestnut Street
 West Chester, Pennsylvania 19380

Adopted: December 5, 2006